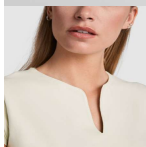


**BELICE CA6532**



**DESCRIPTION**

Fitted t-shirt with crew neck and v-opening on front. Trimmed half-sleeve and side seams.

**COMPOSITION**

94% combed cotton / 6% elastane, single jersey, 200 gsm.

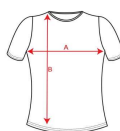
**REMARKS**

\* XXXL size available in white 01 and black 02. \* High quality fabric for a soft and pleasant touch. \* Removable label.

**SIZES**

Adults: S · M · L · XL · 2XL · 3XL / :

**SCHEME**



**QUANTITIES**

	Box	Pack
Adults:	50 un.	5 un.

**COLORS**

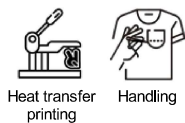


**SIZES**

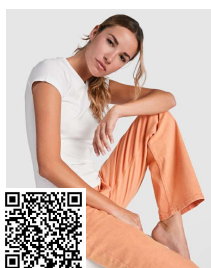
Adults:	S	M	L	XL	2XL	3XL
WIDTH (A)	40cm	43cm	46cm	49cm	53cm	56cm
LONG (B)	59cm	61cm	63cm	65cm	67cm	68cm

\*[Measured from the edge 1 cm below the sleeves / Measured from the highest point of the shoulder to the end of the garment]

**PRINTING TECHNIQUES AVAILABLE**



**RELATED MODELS**



**BALI CA6597**



**JAMAICA CA6627**



**VICTORIA CA6646**



**GUADALUPE CA6647**